

Reusable Fabric Face Masks with Opening for Filter-Serger Directions Regular Sewing Machine Noted by * and in Red

These directions are for experienced sewers using a serger for most of the construction and a regular sewing machine to make the casings on each end. ¼" seams unless otherwise stated. Backstitch all seams. One-way fabric designs require special attention and placement. Use new, clean fabric. Now is the time to consider safety first. Do not be tempted to use fabric from Grandma's or your attic. (Disposable filters can be made from non-woven interfacing. I've read that Kleenex, paper towels, or coffee filters and even HEPA filter unused vacuum bags cut to fit can be used. I've attached an article about the efficiency of these products.) <https://smartairfilters.com/en/blog/diy-homemade-mask-protect-virus-coronavirus/>

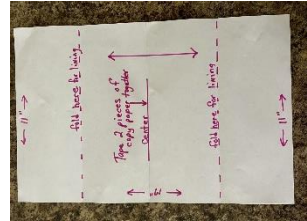
1. Cut out a rectangle 11" x 17" for the front.
(Use 2 pieces of copy paper taped together for a pattern)

***If using a regular machine, make your pattern 11" x 17 ½" to allow for ¼" hem on each end.**

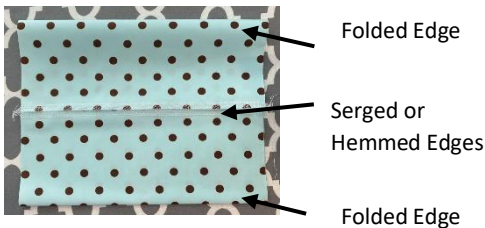
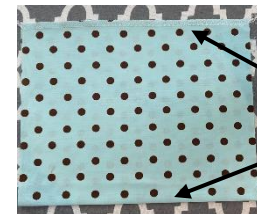
2. Serge both ends of the fabric pieces along the 11" side.



***If using a regular machine, turn under ¼" on each of the 11" ends and sew a narrow hem.**



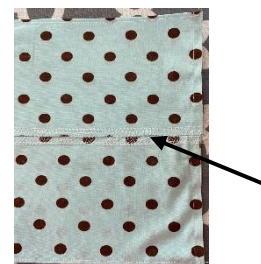
3. Fold in half wrong sides together. Press a crease in the middle so your rectangle is 8 ½" x 11".
4. Open fabric and bring serged edge to the crease in the middle. Press.



5. Sew along the folded edges 1/8"-1/4".



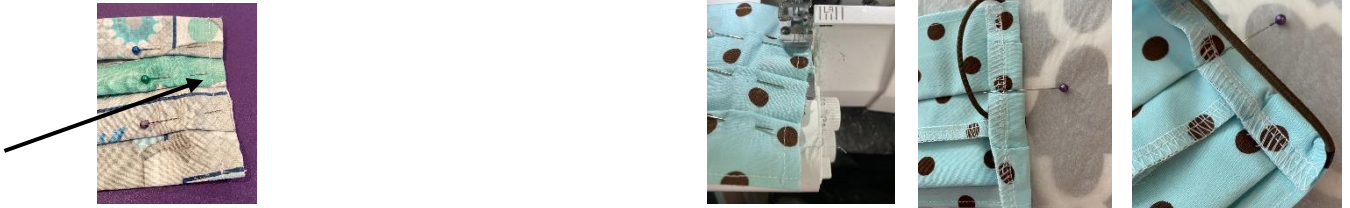
6. Sew the sides together making sure the serged or hemmed edges meet in the middle.



7. Fold in half lengthwise with the lining side facing you. Using your finger and thumb, pinch about 1/2" and turn over to the front side. Pin a 1/2" pleat. Then pin a pleat above the center one and pin a pleat below the center one making sure the pleats are about the same depth and spaced evenly. Repeat on the opposite end. If you are an experienced sewing, you understand when I say you need to "eyeball" your pleats and make them look as evenly spaced as possible paying attention to making sure the top and bottom space look about the same. The finished ends should be about 3 1/2" - 4".



8. Stitch the pleats down using a **regular sewing machine**.



Serge the raw edges securing the ends of the serging "tail". There are You Tube videos that show how to do these techniques. I have been using Stitch Witchery to tack the tails down. (Protect your iron and ironing board with parchment paper.) <https://reallyhandmade.com/five-ways-to-finish-a-serger-thread-chain/> . Fold over 1/2 "to form a casing.



Stitch Witchery

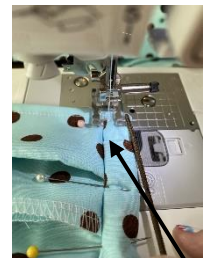


***If you are using a regular machine, either zigzag the edges or turn under 1/4" and turn under 1/2" to form the casing.**

*If elastic is unavailable, you can use elastic ponytail holders for the ear loops. They will have to be inserted as you sew the casing. As a last resort, you can cut 4 -15 "lengths of ribbon and sew in at the 4 corners.



If using a ponytail holder- insert it as you sew the casing

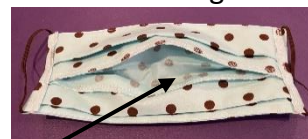
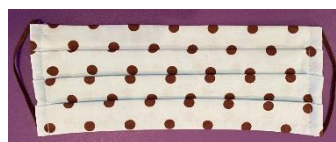


9. Cut 2 10" lengths of 1/8" elastic. Use a safety pin to run the elastic through the casing.



Sew close to this edge to form casing-Be careful not to catch ponytail holder

10. Bring ends of elastic together and tie an overhand knot. The user can adjust the elastic by loosening or tightening the knot. After adjusting, you can pull the knot back into the casing.



Insert Filter Here

