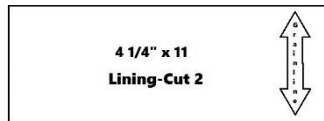
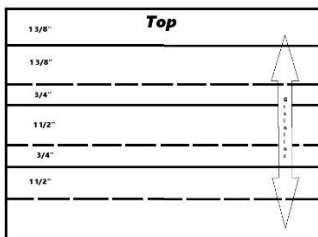


Reusable Fabric Face Masks with Opening for Filter-Serger Directions

These directions are for experienced sewers using a serger for most of the construction and a regular sewing machine to make the casings on each end. ¼" seams unless otherwise stated. Backstitch all seams. One-way fabric designs require special attention and placement. Use new, clean fabric. Now is the time to consider safety first. Do not be tempted to use fabric from Grandma's or your attic. (Disposable filters can be made from non-woven interfacing. I've read that Kleenex, paper towels, or coffee filters and even HEPA filter unused vacuum bags cut to fit can be used. I've attached an article about the efficiency of these products.)

<https://smartairfilters.com/en/blog/diy-homemade-mask-protect-virus-coronavirus/>

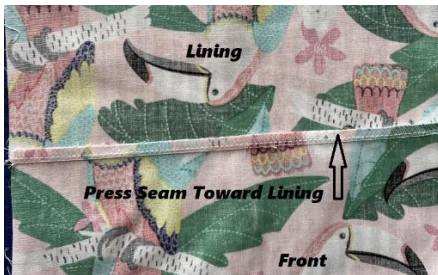
1. Cut out a rectangle 8 ½" x 11" for the front. (Use a piece of copy paper for a pattern)
2. Cut out 2 rectangles 4 ¼" x 11" for the lining. (Fold a piece of copy paper in half)



3. Serge one edge of each of the 4 ¼" x 11" fabric pieces along the 11" side.
4. With right sides together, serge the raw edges of the 4 ¼" x 11" rectangles to the 8 ½" x 11" rectangle along the 11" side.



5. Press seams toward the lining. I like to understitch also, but this step can be skipped if time is crucial.



6. Fold lining pieces toward the front and press again, making sure the seam does not show on the outside.
7. Sew along the raw edges together making sure the lining pieces meet in the middle.



8. Fold in half lengthwise with the lining side facing you. Press. This line will help you space the pleats correctly and make sure the opening is easy to access to insert disposable filters or masks.



9. Turn over to the front side. Starting in the middle, bring the dotted lines up to the solid lines to form 3 pleats. Pin and repeat on the opposite end.



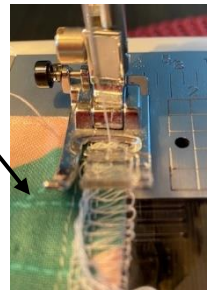
10. If you are an experienced sewing, you understand when I say you need to “eyeball” your pleats and make them look as evenly spaced as possible paying attention to making sure the top and bottom space look about the same. The finished ends should be about 4”.



11. Stitch the pleats down using a regular sewing machine and then serge the raw edges securing the ends of the serging “tail”. There are You Tube videos that show how to do these techniques. You can also use Fray Check or stitch the tails down on the inside with a regular sewing machine.

<https://reallyhandmade.com/five-ways-to-finish-a-serger-thread-chain/>

12. Fold over 1/2 “to form a casing.



13. Stitch 3/8” from the folded edge.

14. Cut 2 10” lengths of 1/8” elastic. Use a safety pin to run the elastic through the casing.



*If elastic is unavailable, you can use elastic ponytail holders for the ear loops. They will have to be inserted as you sew the casing. As a last resort, you can cut 4 -15 “ lengths of ribbon and sew in at the 4 corners.

15. Bring ends of elastic together and tie an overhand knot. The user can adjust the elastic by loosening or tightening the knot.



Insert Filter Here

